



Toad Hall
Nursery Group

**Our approach to your child's
care and education**



Providing the
foundations for
future success

Our locations

We provide a range of sessions and options at each of our sites. For further information about the specifics of each nursery please contact them individually and request information about session times and the options available.

We have 15 nurseries at the following locations:

Chessington | Bridge Road | 020 8391 4447

Ealing | Comer Crescent | 020 8571 6867

Haslemere | Chestnut Avenue | 01428 654117

Hitchin | Glover House, Bury Mead Road | 01462 450354

Horley | Massetts Road | 01293 823500

Langley | Parlaunt House, Parlaunt Road | 01753 542811

Ottershaw | The Old School House, Brox Road | 01932 874286

Pinewood | Pinewood Film Studios | 01753 657149

Ripley | Georgelands | 01483 222020

Shepperton | Shepperton Film Studios | 01932 592525

Swindon | Trinity Hall, Victoria Road | 01793 436432

Walton-on-Thames | Felcott Road | 01932 252858

Walton-on-Thames | Manor Road | 01932 226975

Watford | Hempstead Road | 01923 254637

Woking | Wishbone Way | 01483 486116





Welcome from Ruth

Welcome to the Toad Hall Nursery Group. Toad Hall is a group of 15 children's day nurseries providing childcare and early learning for children from 3 months to school age.

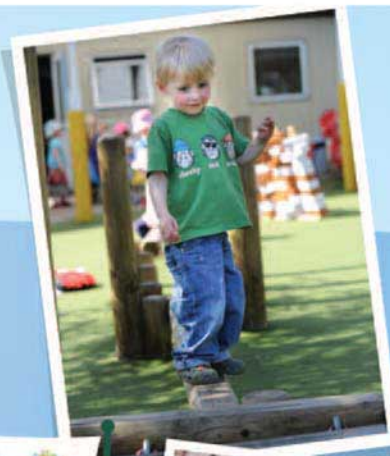
As Chief Executive of the company I am committed to providing the best possible experiences for the children and families that use our nurseries. I have been working with children in their Early Years since training as a teacher in 1989. Most recently I led the Government's national strategy to deliver the Early Years Foundation Stage (EYFS) in my role as Early Years National Director. Our aim is to allow your child to experience an environment where they can grow and develop in a safe and secure way.



I believe that children benefit from a high quality early years experience and at Toad Hall we focus on developing their early language and communication, their enjoyment of the outdoors and their ability to make friends and play well with other children.

I consider it to be essential that we work in partnership with you, as the parent of your child and hope that we can demonstrate our approach by showing you our nurseries.

Ruth Pimentel
Chief Executive



Pinewood
A Toad Hall Day Nursery

Our approach to your child's learning

As we know from our own childhood experiences, children learn best through play and active learning balanced with times of quiet and rest. We want to ensure that your child experiences the very best in childcare and is supported to develop and learn throughout their earliest years. We want the children in our care to be sociable and to have high self-esteem, to enjoy books and stories, to learn about number and how to solve problems. We also want them to develop physically, to enjoy painting, drawing and making and to learn about the world around them. Our staff will plan activities for your child to enjoy on their own or with other children and in the indoor and outdoor environment. We place considerable importance on developing

children's early language skills through games, songs and stories.

Each child will have a key person who will ensure that the children in their group experience a wide range of activities and experiences and that they work in partnership with you to make sure they learn from you as well as letting you know how your child is progressing. Each child will have a special book with examples of the activities they are doing and the staff will talk to you, at any time, about how your child is doing.

All children will follow the statutory Early Years Foundation Stage as prescribed by the Government. More information is available on the web or ask at any of our nurseries.






Toad Hall
Nursery Group





Our partnership approach

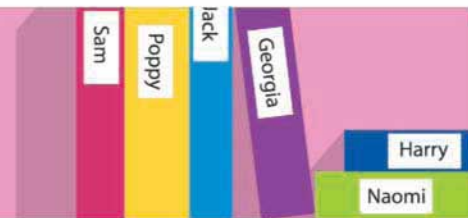
In order for your child to flourish at nursery it is essential that we build a strong partnership with you, as the parent of the child. The nursery teams welcome parents as partners and this relationship needs to be built on trust and understanding. We consider it to be essential that there is a regular two-way flow of information and all the staff will make time to talk to parents or carers at the beginning and end of each day to share information.

At the end of each day the parents of children under 3 years are given a brief summary of their child's day. This information includes feeding times and amounts, sleep patterns, nappy changes and toileting as well as any significant events, learning opportunities and activities they have taken part in.

Children over 3 will begin to be able to share more about their day with you. We will encourage them to tell you all about their day and you will begin to see some of their activities when they show you the products of their activities!

Displays in all of the rooms will show you the activities that the children have been doing and we will also share their Learning Journals with you. These are a record of all that the children have been doing and we encourage you to take these home regularly and add to them throughout their time with us at nursery. They build up a lovely picture of your child's early learning experiences. The nursery will hold regular Parents' evenings where you will be invited to come along and learn more about the nursery and the individual progress of your child.

There are also regular opportunities for you to get involved in nursery life if you are able to do so. Parent skills are welcomed and we also hold regular fund-raising and social events at the nurseries.





Our approach to Healthy eating



At Toad Hall we believe that it is essential that we provide the right nutrition to ensure your child grows and develops well. Our menus and recipes have all been nutritionally analysed to ensure they meet the Caroline Walker Trust, eating well for the under 5s in childcare guidance. This document is recognised as the "gold standard" in nutrition for the under 5s and focuses on the special nutritional needs of young children. All of our recipes have been designed so they can easily be adapted to suit children following an allergy or vegetarian diet.

Our food is all prepared on site and our cooks have all received training on allergies and intolerances. We want to offer you the best possible support, and work with you when it comes to your children's eating and nutritional development. Our nursery staff will liaise with you over any food related issues and our nursery cook's will also work with you to offer your child a broad range of eating experiences.

We provide breakfast, lunch and tea as well as a mid morning and afternoon snack. Fresh water is available throughout the day. We

aim to encourage the development of healthy eating habits so children's mealtimes are a relaxed, enjoyable group time with children interacting and learning valuable social skills, much like a family mealtime.

Babies home routines are followed with either breast or formula milk provided by the parent. In consultation with the parents weaning is gradually introduced using fresh purees. Mothers who wish to breastfeed in the nursery will be supported and offered a quiet, comfortable place to feed their baby.



Aa



Bb



Cc





NVQ
Level 3



N.N.E.B.



Our caring principles

We ensure the welfare of each and every child by providing a secure, safe, environment where children are encouraged to be healthy and active learners. We place a strong emphasis on the health and safety of all children and staff and regularly audit our systems and processes.

Each child will have a key person assigned to them when they begin their time with us at Toad Hall. The key person will play an essential role in supporting the emotional well being of your child and will take responsibility for those aspects of the day which have the greatest impact on their well-being. These include personal care routines – nappy changing, toileting, rest times and

mealtimes. These care routines provide special times to build up secure attachments which underpin your child's healthy emotional development.

Children are encouraged to eat well, to sleep and rest. We work hard to ensure they have a routine but that it is flexible and that it meets their needs as much as possible. Each room is run by a qualified member of staff with either N.N.E.B. or N.V.Q. level 3 in child care. Each member of staff also has a First Aid Certificate. The manager and deputy manager hold a 3 day First Aid at Work qualification. The manager is responsible for Health and Safety.



Developing our staff

We are committed to employing and developing high quality, qualified and experienced staff. Our recruitment processes ensure that each new member of staff is thoroughly vetted through careful references and enhanced criminal records bureau checks.

All our practitioners access regular training and development that we provide ourselves through our comprehensive in-house training programme or through attending a range of external courses. We actively encourage all the staff to continue to develop and learn about children and how best to support them.

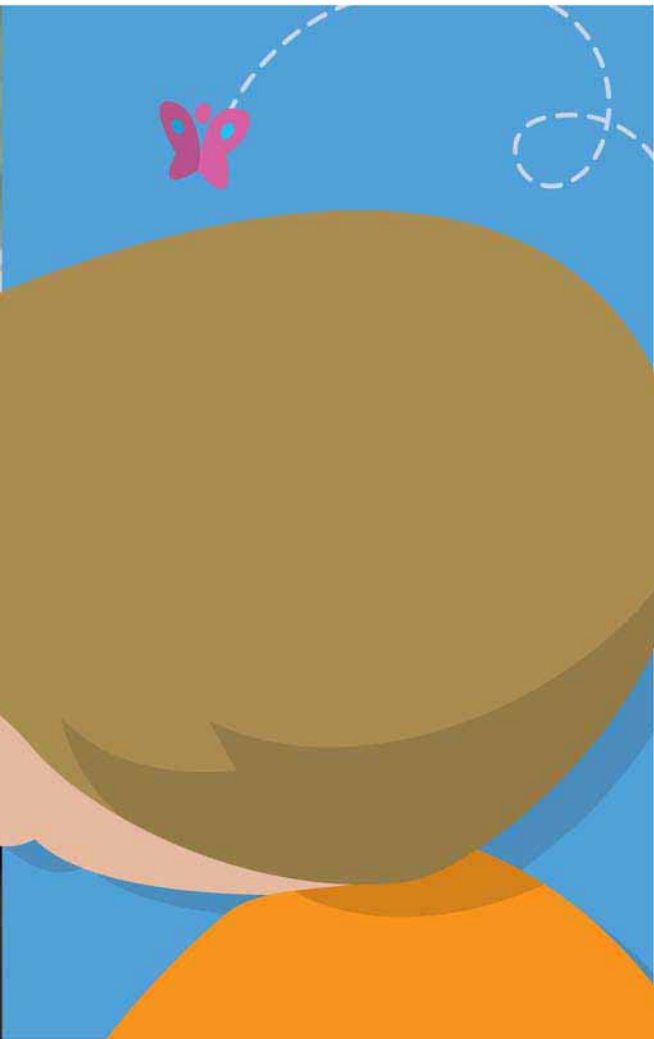
We want our staff to be confident and competent in understanding child development and by ensuring that they keep their ideas fresh and exciting we know we are providing the best experiences for you and your child.

We are dedicated equal opportunities employer and committed to the development of positive practices that include parents, children and staff.





10



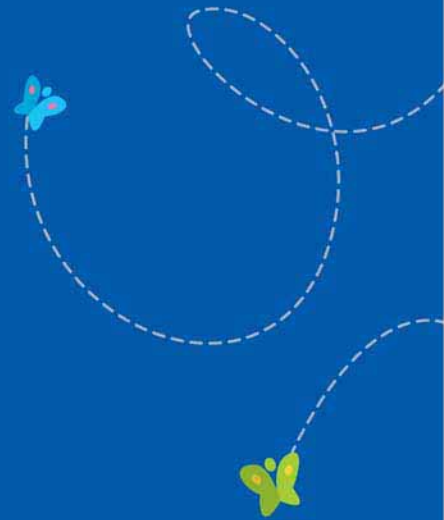


Getting to know you and your child

When your child starts at nursery we will provide them with complimentary settling in sessions to ensure that they, and you, are comfortable with the nursery. At first the child will attend for short periods with you and as they become more comfortable and used to the key person their time will be extended. Each child is different and we recognise that for some children this will be an easier process than for others. Some will require a longer period of time to settle and our nursery staff will be available to provide the necessary

support as your child makes this important transition.

We will supply you with a parents' handbook which have details of all our policies and procedures. You will be required to complete settling in forms with your child's key person to enable us to have as much information as possible about your child and thereby make your child's start at the nursery as comfortable as possible.



Careroom Limited

3rd Floor Wembley Point
1 Harrow Road
Wembley, HA9 6DE

Tel: 020 8795 0650

Fax: 020 8903 3557

Email: headoffice@toadhall-nursery.co.uk

www.toadhall-nursery.co.uk